

Halloween pendant

Tools and materials:

- 🦇 Art Clay Silver (ACS) Clay type 2 g
- 🦇 ACS Paste type a small amount
- 🦇 Softmold Halloween series B (F-1787)
- 🦇 Stainless steel brush, Cotton swab, Spatula
- 🦇 Sponge sanding pad, Favourite chain



1. Roll ACS Clay type 2 g ball shape.



2. Coat thin layer of food oil in gap of the softmold with a cotton swab.



3. Bury the clay into the mold.



4. After moisten the surface of clay, scrape off the excess clay.



5. After the clay dries, bend the mold a little and take it out with the tip of finger.



6. Smooth the surface with a sponge sanding pad. Fire it for 5 mins.



7. Polish the piece with a stainless steel brush.



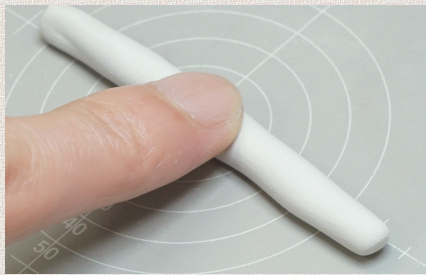
8. Attach a round jump ring and your favourite chain.



Halloween Ring

Tools and materials:

- ✦ Art Clay Silver (ACS) Clay Type 7 g
- ✦ ACS Paste Type (a small amount)
- ✦ ACS Syringe Type (a small amount)
- ✦ Softmold Halloween line lace (F-1975)
- ✦ Basic tools (Stainless steel brush, Tweezers, Spatula, sponge sanding pad #320-600 grit, Work surface, Tooth pick,)
- ✦ Food oil
- ✦ Cotton swab, Water



1. Roll ACS Clay type 7g rope shape with fingers.



2. Apply thin layer of food oil in gap of the softmold and bury the clay.



3. Place 1mm plastic strips both side and push softly from backside of the mold.



4. Take the clay out slowly from the mold.



5. Moisten a stick memo around a wooden mandrel and the clay. Wind the clay around the mandrel.



6. Join the end with ACS Syringe type.



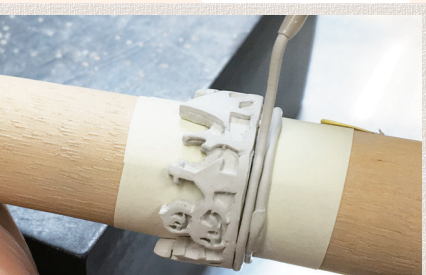
7. Cut out excess clay with a needle.



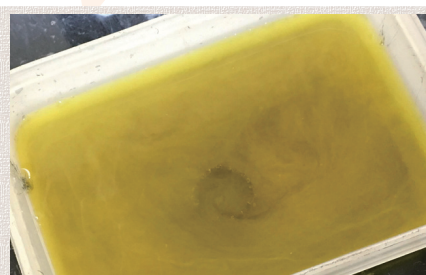
8. Cut excess clay on the bottom with a steel scraper. Dry it.



9. Form and file it with a hand file.



10. Decorate bottom part with ACS Syringe type. Make a notch (cut) on the bottom line after the Syringe dries. After the syringe dries, fire it for 5mins.



11. After polishing the piece with a stainless steel brush, sulphurize it.



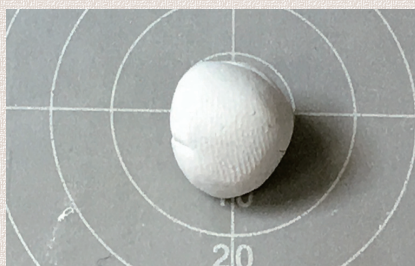
12. Polish the piece with a polishing cloth. It is ready to wear and go to Halloween party!

Halloween Earrings

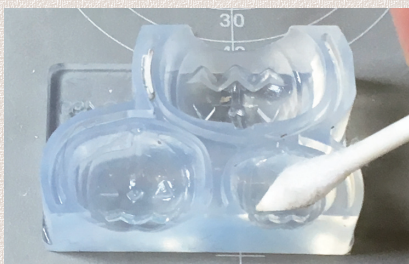


Tools & Materials

- ✦ Art Clay Silver (ACS) Clay type 2g
- ✦ ACS Paste type a small amount
- ✦ Softmold Jack-o-lantern (F-1785)
- ✦ Ear Posts & nuts 1 pair (K-0071)
- ✦ Stainless steel brush, Cotton Swab, Spatula
- Sanding paper, Sponge sanding pad
- Drill bit 1mm, Stone setting bur 2.0φ



1. Roll ACS Clay type 2g ball shape.



2. Coat thin layer of food oil in the mold with a cotton swab.



3. Bury the clay into the mold.



4. After moisten the surface of clay, scrape off the excess clay with a spatula.



5. After the clay dries, bend the mold a little and take the clay out with fingers.



6. Smooth the surface with a sponge sanding pad.



7. Flatten the backside with a sanding paper.



8. Drill 1mm hole on the back with a drill bit 1mm φ, treat the hole with a stone setting bur 2.0φ.



9. Attach a ear post with AC Paste type. After the paste dries, smooth the surface with a sponge sanding pad.



10. After firing for 5 mins, polish the piece with a stainless steel brush.

◇The finding used for this project.◇



Ear posts & nuts
1 pair



Ear post is made long enough to be embedded into clay. Good for small earrings.

Material/ SV925 Length approximately 12.6mm

