

ART CLAY™

Advanced Instruction Guide



Paper Type Accessories

“Folding”, “Cutting” and “Bending”

Origami Accessories

Contents

- **About Art Clay™ Silver Paper Type** P3
- **Origami Earrings** P4
- **Origami Pendant** P5

- **Assembled Hinge Bracelet** P7

- **Stone Setting Necklace (Basic)** P9
- **Stone Setting Necklace (Option)** P10

- **Quilling Brooch** P11
- **Quilling Pendant** P13
- **Quilling Earrings** P14

- **Flower Necklace** P15
- **Flower Ring** P16

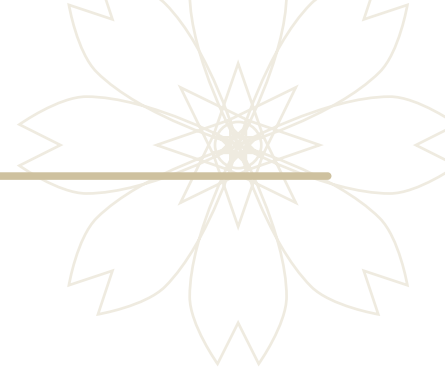
- **Paper Cutouts Pendant** P17
- **Paper Cutouts Ring** P19



Introduction

Art Clay™ Silver Paper Type can be easily made into any shape as paper craft and is a metal clay material which turns into pure silver (over 99.9%) after firing, similar to the other clays in the Art Clay Silver product series. It can easily fold and be cut out with a puncher and some scissors without needing to add moisture while working. Thus, Paper Type can be used not only for origami and paper craft techniques, but also with other craft techniques such as fabric work, leather etc. The Art Clay Advanced Instruction Guide - Paper Type Accessories introduces 12 innovative pieces with Art Clay™ Silver Paper Type's basic techniques (folding, cutting and bending) which are totally different from rolling out as with the other types of clay in the series.

About Art Clay™ Silver Paper Type



Specification Size: 75mm x 75mm, approx. 0.25mm thick
96% Silver (in clay state)

Molding

Make any piece considering shrinkage first (below 10% in length). Do not add water to the clay and/or work in humid conditions as this water based clay is torn easily by adding water. Keeps flexibility without adding water due to the binder composition.

Drying

Fire without drying.
Do not dry with hair dryer etc. at high temperature (over 50°C/122°F). Can turn fragile due to the binder.

Firing

Fire from room temperature in a kiln.

- Place the piece into the kiln at room temperature, and raise the temperature up to 800°C/1472°F or 850°C/1562°F. Hold at 800°C/1472°F for 30 mins. or 850°C/1562°F for 20 mins.
- The binder is non toxic. Ventilate the smoke from burning binder well.
- Do not use Art Box (microwave kiln), gas torch or gas stove for firing.

Storage

For unused clay, place back into the package and paper box, then store at room temperature. Does not have to be zip closed. Do not store in high temperature environments, high humidity environments (in sun-heated car etc, and places over 50°C/122°F, or in over 80% humidity) or in a refrigerator, so as to maintain the binder quality. Use promptly after opening.



*Do not knead the clay into a clay lump. Paper Type might burst during firing due to the binder.

*Do not mix with other Art Clay series products due to the different binder types.

*Paper Type will lose its proper form if water is added.

Origami Accessories

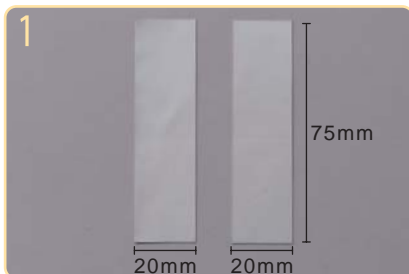
Use basic technique "Folding".
 Make 3D pieces by attaching folded parts with a silver wire.
 Can finish with a handy micro motor point.



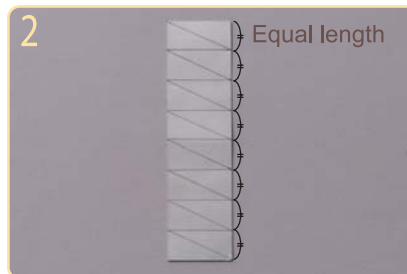
Origami Earrings

Materials: Art Clay™ Silver Paper Type approx. 1/2 Sheet, Screw eye #2 (φ 0.8) 2pcs, Round jump ring (extra small) 2pcs, Pearl (half-drilled) 2pcs, Rolo chain (SV925) 18cm, Hinged ear screws 1 pair

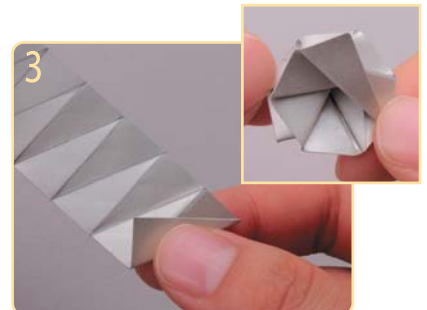
Tools: Craft knife, Art Clay™ Silver Exclusive Work Surface, Epoxy adhesive



1 Cut the Paper Type into 2 parts of 20mm width.

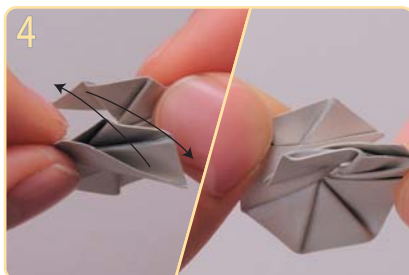


2 Crease lightly, and draw straight and diagonal lines in 8 equal parts with a pencil as in the above picture.



3 Fold in and down over and over again according to the marked guide line.

*Do not crease strongly so as not to create cracks. Spiral shape is made after folding. If you fold without following the marked line, the shape will open up.

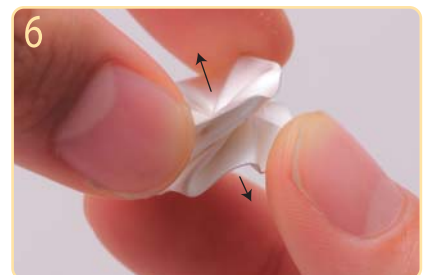


4 Cross the start and the end.



5 Place 2 pieces on a fiber board, and cover with some fiber cloth gently. Fire at Paper Type's preferred firing condition.

*Place the blanket so as not to open up the shape and detach the crossing part.



6 After firing, lift up and open up the piece to fix the shape.



Polish the pieces with a stainless steel brush. Cut the chain into half.



Attach the two screw eyes to two pearls with some epoxy adhesive. Confirm that the placement of the chain which attaches to the pearl comes to the bottom by rolling up the chain around the pieces and putting on. Then, attach the screw eye with the pearl to the chain (see Picture 1). Rolling up the chain around the piece once again, fix the chain with the round jump ring (see Picture 2).



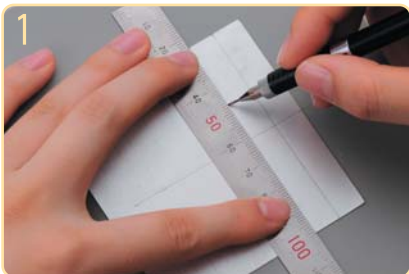
Cut the chain 2cm away from the join of the chain, attach each piece to the ear screws and finish.

Origami Pendant



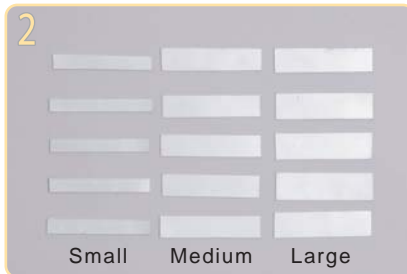
Materials: Art Clay™ Silver Paper Type approx. 1 sheet, Fine silver round wire ϕ 0.6 (approx. 20cm long), Pearl (half-drilled) 1pc, Round jump ring (small) 1pc, Diamond cut curb chain (SV925) 1pc

Tools: Craft knife, Art Clay™ Silver Exclusive Work Surface, Epoxy adhesive, Handy micro motor, Round nose pliers, (optional tool) Diamond point (Shaft dia. 2.2mm)

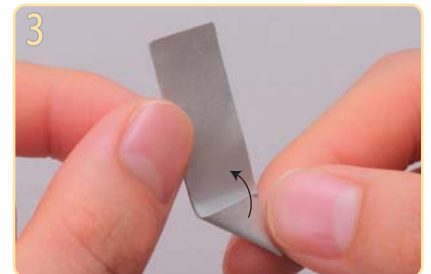


Draw a guideline with a pencil according to p.6 design pattern, and cut with the craft knife.

*Make your cut in 2-3 strokes. It is difficult to cut neatly when cutting all at once.

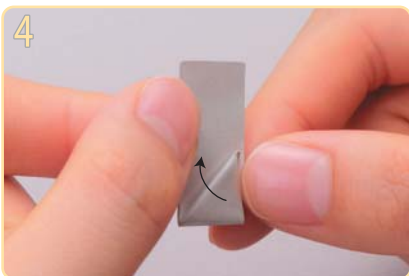


Cut 5 sheets each large (10mm width), medium (8mm width) and small (5mm width).

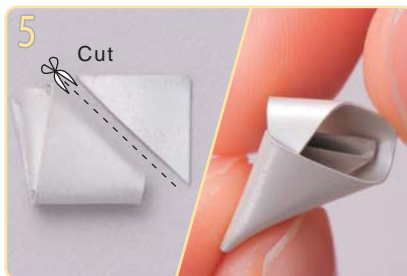


Fold the strip into a triangle shape lightly.

*Do not crease strongly so as not to crack.



Fold the strip into a triangle shape lightly over and over again.



Cut the last part, and interfold the last triangle part into the piece.



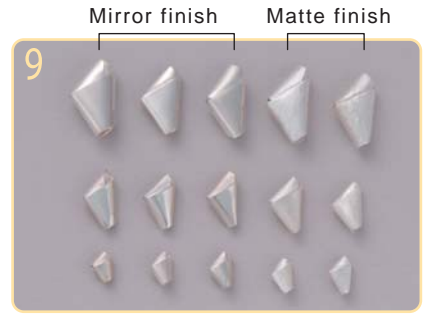
Fold all strips.



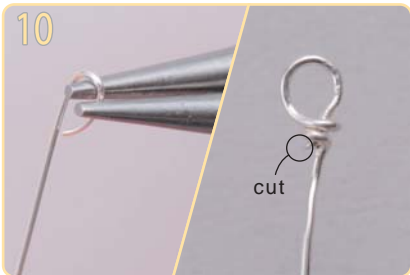
Expand the hole gently with a toothpick to thread the silver wire.
 *Do not open the hole up too much so as not to lose the desired shape and create cracks.



Fire (p.3) and polish all pieces with a stainless steel brush. Then, make a matte finish to 2 large, medium and small pieces with sponge sanding pads or the diamond point.



Polish the rest (3 large, medium and small pieces) with sponge sanding pads (red#320-600, blue#800-1000 and green#1200-1500) and make a mirror finish using a polishing cloth with some silver polish.



Roll up the tip of the wire with some round nose pliers, twist the base and cut any extra wire.



Thread large matte finish and mirror finish pieces (in order) onto the wire alternatively, wind up once, and twist the base to make one layer.
 *Leave no gap between each part when twisting the wire.



Thread the medium and small pieces onto the wire in order (same as in Step 11) and make two more layers of petals decreasing in size for the upper layers.



Bend the tip of the wire into an L-shape with some round nose pliers, cut the tip 5mm from the end and attach pearl.



Fix the shape, attach to the round jump ring and the chain, and finish.

Pendant

Design Pattern

	Medium 8mm width	Medium 8mm width	Medium 8mm width	Small 5mm width	Small 5mm width	Large 10mm width	Large 10mm width	Large 10mm width
		Medium 8mm width	Medium 8mm width		Small 5mm width	Small 5mm width	Small 5mm width	Large 10mm width
							Large 10mm width	Large 10mm width

Assembled Hinge Bracelet

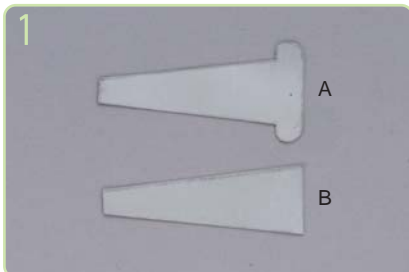
Assemble all the parts and make an adjustable hinge type bracelet. Can change synthetic fiber thread to a leather strip or hemp etc. Make a 16cm bracelet using 16 parts.



Assembled Hinge Bracelet

Materials: Art Clay™ Silver Paper Type approx. 1 and a half sheets

Tools: Bamboo stick (Dia. approx. 2.5mm), Synthetic fiber thread approx. 70cm (Japanese Size 12), Art Clay™ Silver Paper Type package

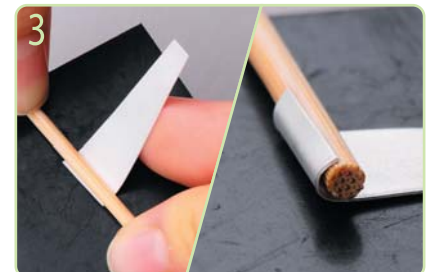


Cut the Paper Type according to the design pattern on p.20 (A 1 pc, B 15 pcs).



After firing (from room temperature to 850°C/1562°F for 20mins), polish both sides of all pieces with a stainless steel brush.

*Can bend easily if fired at 850°C/1562°F for 20mins. Might crack when bending if fired at 800°C/1472°F for 30mins.



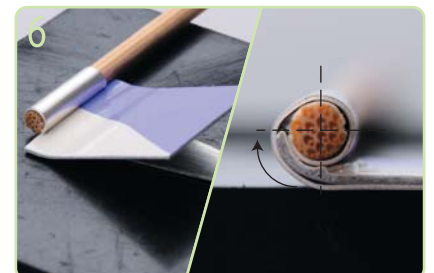
Roll up piece A half the diameter of the bamboo stick.



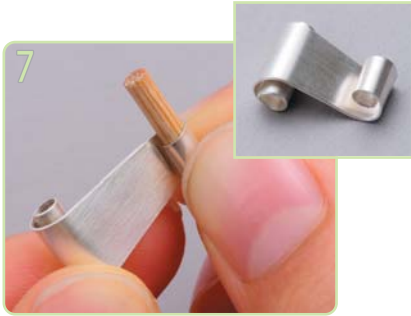
Press and shape the end with a burnisher to make a firmly rounded shape.



Roll up around the bamboo stick, and leave a 1mm gap at the end (see image).



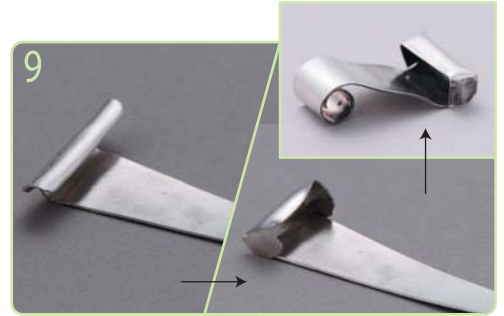
Tuck a piece of heavy paper (cut Paper Type package) into the gap. Then, roll up with the paper inside a quarter of the diameter of the bamboo stick. Remove the paper.



7
Roll up on the other side as well, with the paper to the opposite direction. Continue for piece A all 14 pieces.



8
Mark piece B 5mm away from the narrow width end, and cut. Then, roll up half the diameter of the bamboo stick (same as in Step 3). Roll up the other side as in Steps 3-6.

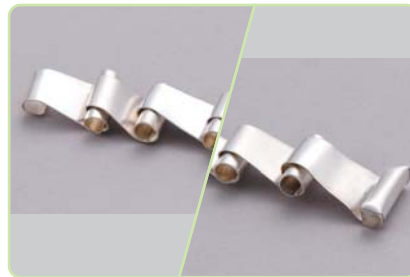


9
Roll up the other 1 piece A half the diameter of the bamboo stick and bend in 90 degrees the two end extensions (see image). Then, roll up the other end as before (same as in Steps 3-6).

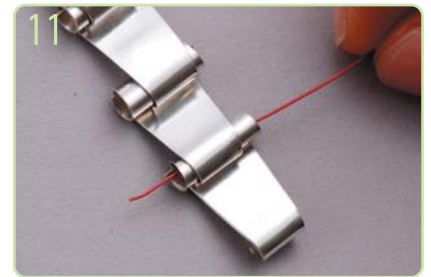
*Sand with a file if the end is sharp.



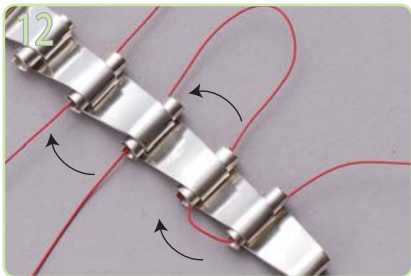
10
Attach all hinge parts in the same direction.



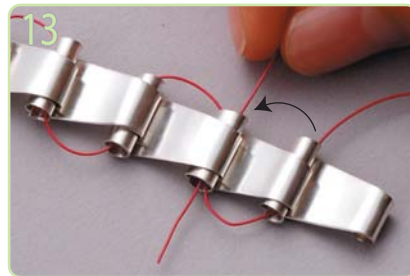
11
Attach piece A and piece B of Step 8 at both ends.



12
Cut the synthetic fiber thread into a piece approx. 70cm long and thread through the hinge hole to the half way length point of the thread (Use a red thread for instruction).



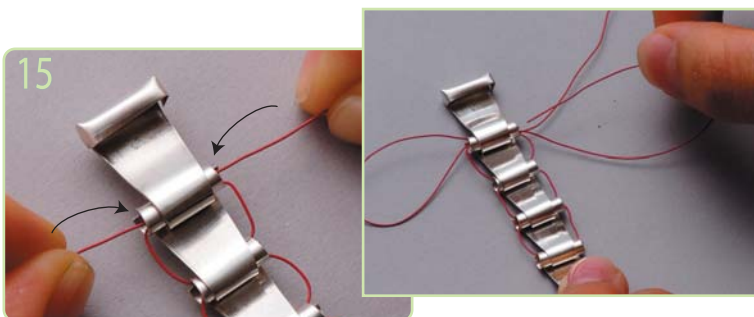
13
Thread, sewing all pieces in one direction.



14
Then, cross thread in the other direction.



15
Cross thread the last piece, and tie by threading the thread from the bottom to the top (see image).



16
Thread through the same hinge again and tie as in Step 14 again. Attach an epoxy adhesive to the knot, cut any extra thread and thread the ends of the thread into the knot.



Finish.

Stone Setting

Cover irregular shape natural stones and glass with Paper Type. Can create an embossed texture on Paper Type.

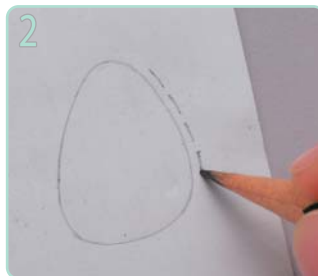


Stone Setting Necklace (Basic)

Materials: Art Clay™ Silver Paper Type, Bail back 1pc, Art Clay™ Silver Oil Paste (a small amount), Natural stone
Tools: Crafts scissors



1 Place the stone (in example image, Turquoise) on the Paper Type, and draw a line with a pencil around the stone.



2 Draw a broken, auxiliary line 2mm away from the first line.



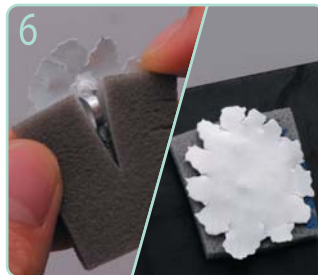
3 Cut the Paper Type with some crafts scissors so as not to cut the auxiliary line, and fire in the kiln from room temperature to 850°C /1562°F for 20mins. ※¹



4 Attach the bail back with some Oil Paste. Then, dry and fire at 850°C/1562°F for 10mins.
 *If the bail back is attached on the top of the piece, the stone will not be able to be set easily.



5 After firing, only polish the side without the bail back with a stainless steel brush.
 *As Paper Type hardens, if you polish both sides, it tends to crack when stone setting.



6 Cut a sponge sanding pad to support, hold the bail back, and place on the foam piece.

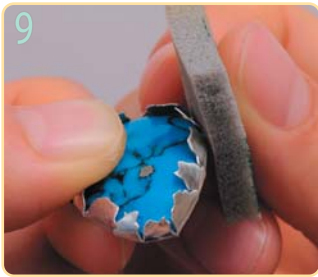


7 Place the stone in the center, and fold in the Paper Type, working diagonally little by little with some tweezers.

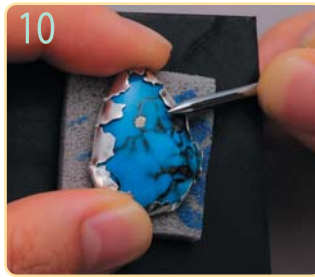


8 For the time being, fold in the entire bezel so as not to touch with the stone, to allow for polishing.

※¹ Fire from temperature to 850°C/1562°F for 20mins. Might crack when bending if fired at 800°C/1472°F for 30mins.



9 Polish with sponge sanding pads (red#320-600, blue#800-1000, green#1200-1500) so as not to damage the stone.



10 Fold in the bezel completely with a burnisher, and finish.



Stone Setting Necklace (Option)



Materials: Art Clay™ Silver Paper Type, Bail back 1pc, Art Clay™ Silver Oil Paste (a small amount), Natural transparent stone/ glass etc. (in this example, Amber)

Tools: Art Clay™ Silver Exclusive Design plate/ creatures



1 Place Paper Type onto the design plate, and emboss with the pattern by pressing with the handle of a file.
*Do not tear the Paper Type by pressing too strongly.



2 Turn over the impressed side of the Paper Type to the front, place the amber piece and draw a line around the amber's shape with a pencil.



3 Draw a broken, auxiliary line 2mm away from the line. Cut the Paper Type with some craft scissors, being careful not to cut the auxiliary line.



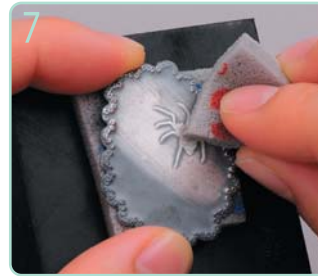
4 Fire in the kiln from room temperature to 850°C/1562°F for 20mins. Turn the concaved side to the front and make some decoration on the edge with some beading tools.
*Lay your piece on a hard object such as a stainless steel tray with polishing cloth underneath so as not to damage the piece when using beading tools.



5 Attach the bail back with some Oil Paste and fire at 850°C/1562°F for 10mins.
*If the bail back is attached on the top of the piece, the stone will not be able to be set easily.



6 After firing, turn over the piece and polish only the inside with a stainless steel brush and immerse in some liver of sulphur. *As Paper Type hardens by polishing both sides, it tends to crack when stone setting.



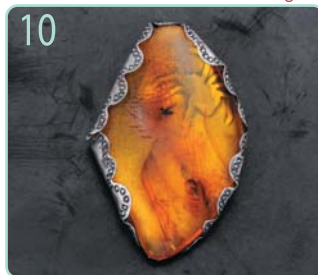
7 Polish the front side with a red sponge sanding pad (#320-600).



8 Place the stone in the center, and fold in diagonally little by little with some tweezers.



9 Fold lightly in the entire bezel so as not to touch with the stone (to prepare for polishing). Polish with sponge sanding pads (red#320-600, blue#800-1000, green#1200-1500) so as not to damage the stone.



10 Now fold in the bezel completely with a burnisher, and finish.



(* 2 examples on right side of picture use glass.)

Quilling

Make openwork pieces utilizing the thickness of Paper Type. Soft quilling effect looks like a beautiful lace finish, made with the Quilling bar. Can change the style by the arrangement and combination.



Quilling Brooch

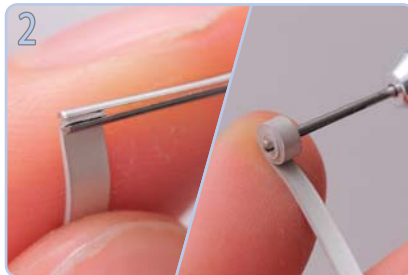
Materials: Art Clay™ Silver Paper Type approx. 1 sheet, Fine silver round wire $\phi 0.6$ (approx. 3cm long), Findings for brooch (35mm) 1pc, Pearl (half drilled) 2pcs, Art Clay™ Overlay Silver Paste

Tools: Craft knife, Rubber protection mat for a craft knife, Quilling bar, Epoxy adhesive, Glue stick, 4cm wide masking tape



Mark and cut clay into 24 strips 2mm in width.

*Make your cuts in 2-3 strokes. It is difficult to cut neatly when cutting all at once.



Nip the end of the Paper Type with the tip of the Quilling bar. Roll up as you push against your finger.



Hold the end for 5secs. to create a shape with your fingers, and take out the Quilling bar slowly.



Adjust the roll with the Quilling bar according to p.12's design. Attach the end with some glue stick temporarily.

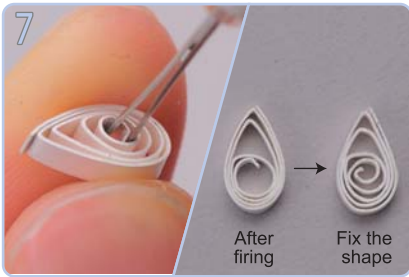
*Attach the glue stick with a spatula.



Nip the end lightly and make 6 pieces in teardrop shapes.



Nip the opposite side, and make 18 pieces marquise shape.



Fire pieces made in Steps 5 and 6 (p.3), and fix the shape with the Quilling bar and some tweezers.



Cut the tape into an approx. 8cm piece, turn the sticky side to the front and place the marquise shaped pieces according to the design pattern below.



Paste a small amount of Oil Paste into the joins.
*Mix up well before using Oil Paste.



Cut the wire into 2 pieces of 1.5cm each, bend the tips 1mm at one end of each piece and set up into the center of the pieces. Then, attach with some Oil Paste.



Place teardrop shaped pieces around the wire, attach with some Oil Paste and dry.



Cut off any extra tape and fire from room temperature to 850°C/1562°F for 10mins.
*Fire from room temperature when firing with the tape. If you place a piece in an already high temperature kiln, fire will occur.



After firing, turn the backside to the front, and cover the piece with some fiber blanket on a fiber board. Then, attach the brooch pin with some Oil Paste, dry and fire.



*If you paste watered down Overlay Silver Paste on the backside before attaching the brooch pin, the piece will be reinforced.



Polish the entire piece with a stainless steel brush and the edges with a burnisher.



Attach the pearls with some epoxy adhesive, attach the brooch pin and finish.

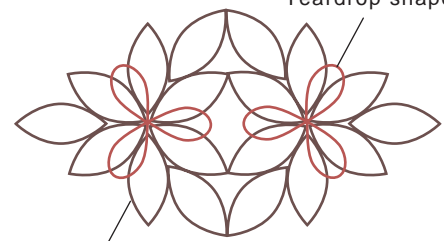
Design Pattern

Step 4



Design Pattern

Red line 2nd layer
Teardrop shape



Black line 1st layer
Marquise shape

Quilling Pendant

Materials: Art Clay™ Silver Paper Type approx. 1 sheet, Art Clay™ Silver 650/1200 Clay Type approx. 5g, Art Clay™ Silver Oil Paste, Royal silver bezel (L:30cm/W:4.5mm), Round jump ring (medium) 1pc, Natural stone Onyx ϕ 8 1pc, Art Clay™ Overlay Silver Paste

Tools: Craft knife, Rubber protection mat for a craft knife, Quilling bar, 4cm wide masking tape, Pickling compound, Epoxy adhesive



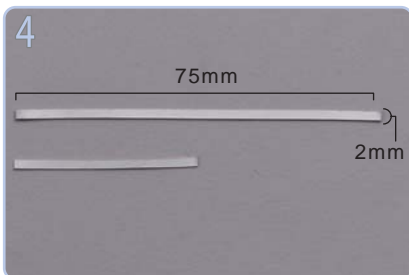
1 Make a bezel for the Onyx with the royal silver bezel.
*Leave a little space so as not to catch the stone when pulling the bezel up with some tweezers.



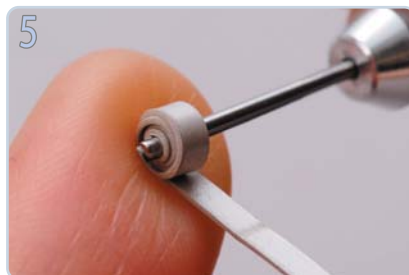
2 Roll out Clay Type 3mm thick, embed the bezel, cut off any extra clay and dry.



3 Sand with a file and a red sponge sanding pad (#320-600) to fix the shape and fire at 650°C/1202°F for 30mins.



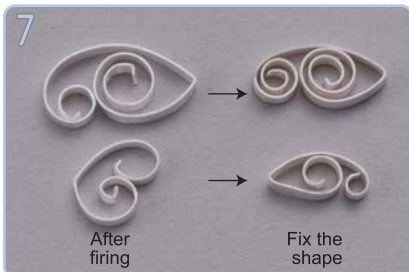
4 Mark and cut the Paper Type into 10 strips 2mm wide. Cut 3 pieces in half (7 long pieces, 6 short pieces).



5 Fold long 2mm wide strip in half, and roll up both ends to the center with the Quilling bar.



6 Take off the bar slowly, and fix the shape (see image). Make short ones the same shape as in Steps 5-6. Make 7 large pieces and 6 small pieces.



7 Fire (p.3), and fix the shape with the bar and some tweezers.



8 Cut the tape into an approx. 5cm piece, turn over the sticky side to the front and place pieces with some tweezers according to the design pattern on p.14.



9 Attach the joints between pieces with some Oil Paste and dry.



10 Cut any extra tape off, and fire from room temperature to 850°C/1562°F for 10mins.

*Fire from room temperature when firing with the tape. If you place a piece in a high temperature kiln, fire will occur.



11 Paste watered down Overlay Silver Paste on the backside with a brush, and fire at 800°C/1472°F

*Pasting watered down Overlay Silver Paste on the backside reinforces the piece.



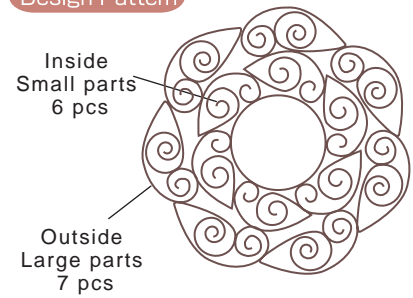
12 Oxidize with some pickling compound, and remove any oxidized film on the royal silver bezel. Then, polish the entire piece with a stainless steel brush, and the edges with a burnisher.



Attach some epoxy adhesive on the bottom of the bezel, set the stone, attach the round jump ring and a chain, and finish.



Design Pattern

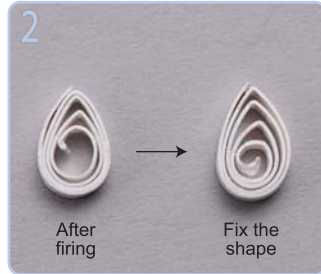


Quilling Earrings

Materials: Art Clay™ Silver Paper Type, Fine silver round wire ϕ 0.6 (approx. 3cm long), Art Clay™ Silver Oil Paste (a small amount), Art Clay™ Overlay Silver Paste (a small amount), Precious Stones/ Hematite ϕ 5 2pcs, Round jump ring (small) 2pcs, Round jump ring (medium) 2pcs, Hinged ear screws 1 pair
 Tools: Craft knife, Rubber protection mat for a craft knife, Quilling bar, Glue stick, 4cm wide masking tape, Epoxy adhesive



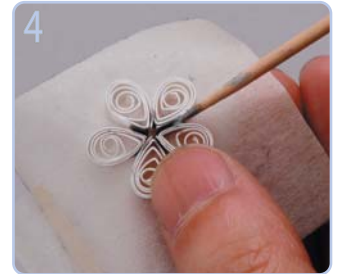
1 Make 20pcs teardrop shape same as in Steps 1-5 of the Quilling Brooch.



2 Fire from room temperature (p.3), and fix the roll with the bar and some tweezers.



3 Cut the tape into an approx. 4cm length, and turn over with sticky side on top and place pieces with some tweezers according to the design pattern below.



4 Attach a small amount of Oil Paste and dry.



5 Cut the wire into a 1.5cm piece and set up the wire which is bent 1mm on one end in the center.



6 Place 5 teardrop shaped pieces around the wire, and attach with a small amount of Oil Paste and dry.



7 Cut off any extra tape, and fire from room temperature to 850°C/1562°F for 10mins.
 *Fire from room temperature when firing with tape. If you place a piece in a high temperature kiln, fire will occur.

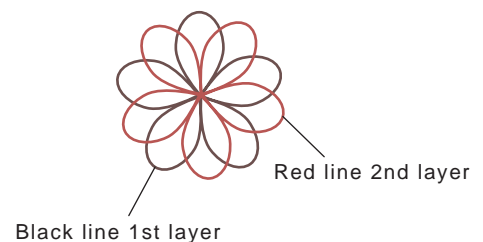


8 Polish the entire piece with a stainless steel brush and the edges with a burnisher.



9 Attach the hematite with some epoxy adhesive and attach with round jump ring (small), round jump ring (medium) and hinged ear screws, and finish.

Design Pattern



Flower Accessories

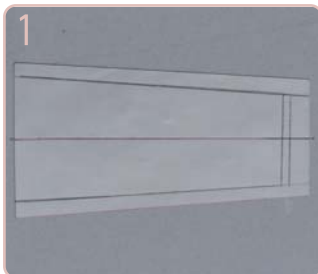
Make these delicate and beautiful dandelions by cutting and bending Paper Type. 3D effect and pollen can be created by applying Gold Paste on the center tips.



Flower Necklace

Materials: Art Clay™ Silver Paper Type (approx. 1 sheet),
Art Clay™ Gold Paste (a small amount),
Wire necklace (SV925) 38cm/ φ 0.75 1pc

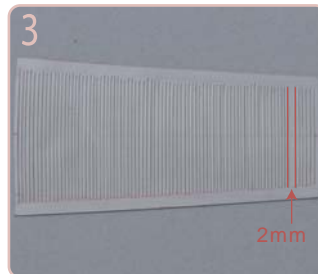
Tools: Craft knife, Ruler, Glue stick, Round nose pliers, Agate burnisher, Carbon paper



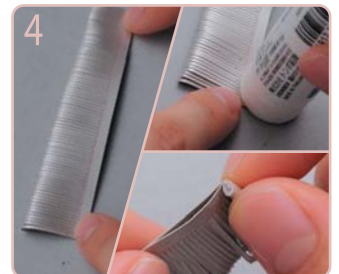
Place a sheet of carbon paper on top of a sheet of Paper Type and the copy of the design pattern (p.20), transfer the outline with a pencil, and cut out into 3 parts along the outer line. (Large 1, Medium 1, Small 1).



Remove the carbon paper, and cut the Paper Type at 1mm parallel lines inside of the pattern. Do not cut onto the side strips.
*It is recommended to use a transparent ruler to check if the cutting line is perfectly vertical against the center guideline.



Leave one line of 2mm so as to use to thread the wire necklace later.



Fold both sides of the Paper Type, and attach the base with some glue stick, and roll up from the longer petal so as not to crease.
*The edges of the bottom strips should be rolled to exactly match.



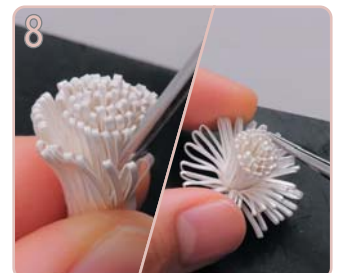
As you roll inwards, the inside layer of Paper Type will get tangled. Fold these areas 2 or 3 times inside the roll and then continue.



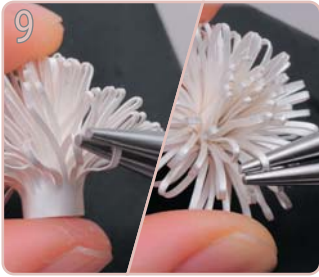
Make sure to match the bottom edge in the same line, and fix with some glue stick (Do the same process for all 3 size patterns).



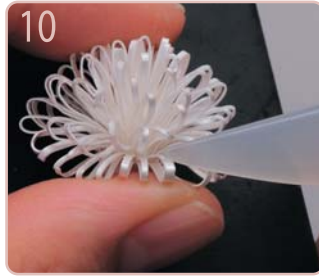
Make a pit in the fiber board, and place the piece in the pit. Gently surround the piece with some fiber cloth to the same height of the piece.



Fire from room temperature and hold at 800°C/1472°F for 30 mins. After firing, catch the outer petals and open outwards with the tip of a burnisher or some tweezers.
*If firing at 850°C/1562°F for 20 mins, petals will stick too closely and be difficult to open up.



Catch the inside of the petal tips with some round nose pliers, and press to the center to make a round tip.



Support the petal with your fingers, and burnish with an agate burnisher.



Apply Gold Paste on the edge of the petals with a fine-tip paint brush, and dry the piece. Put it in the kiln at 500°C/932°F, and hold at 800°C/1472°F for 5 mins.



Find the thickest petal, and run the wire necklace through it.



Flower Ring



Materials: Art Clay™ Silver Paper Type (approx. a half sheet), Art Clay™ Silver 650/1200 Clay Type 10g,

Art Clay™ Silver Oil Paste (a small amount)

Tools: Craft knife, Ruler, Glue stick, Round nose pliers, Agate burnisher, Carbon paper



Complete Steps 1-7 of Flower Necklace using a ring design pattern, and fire the piece. After firing, do not open the petals yet.



Make a 1.5mm thick flat ring with a round stage using Clay Type, fix the shape with a red sponge sanding pad (#320-600), and fire the ring.



Apply some Oil Paste on the ring stage, and attach the unopened petal bud.



Make a ring mandrel with some fiber cloth to help stand the ring, dry, and fire at 800°C/1472°F for 30 mins. *If firing at 850°C/1562°F for 20 mins, the petals will stick too closely and be difficult to open up.



Catch the outer petals and open outwards by using the tip of a burnisher or some tweezers.



Catch the inside of the petal tips with some round nose pliers, and press to the center to make a round tip (If you add gold tips, refer to Step 11 of Flower Necklace).



Support the petals with your fingers and burnish with an agate burnisher. Polish the ring band with a stainless steel brush and a red sponge sanding pad (#320-600).



Finish.

Paper Cutouts Accessories

Cut Paper Type as paper cutouts, and create a 3D effect. An openwork piece with overlapping patterns.



Paper Cutouts Pendant

Materials: Art Clay™ Silver Paper Type (approx. 1 sheet), Core cork clay, Art Clay™ Overlay Silver Paste (a small amount)
Tools: Craft knife, Rubber protection mat for a craft knife, Carbon paper, Glue stick



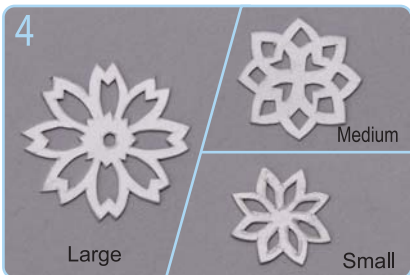
1 Make a diameter 2.5cm ball with the cork clay and naturally dry over 1 day.
 *Dry completely.



2 Place a sheet of carbon paper and p.18's design on the Paper Type, and transcribe the design by tracing the line with a pencil.



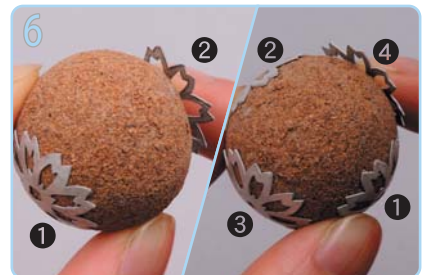
3 Cut from the center according to the design with the craft knife.



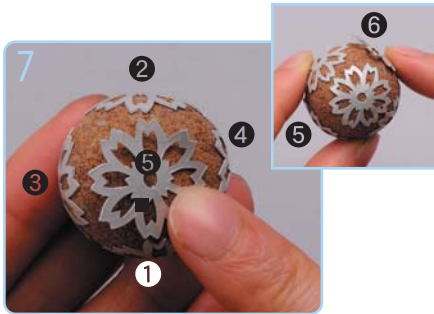
4 Cut into Large 6 pieces, Medium 4 pieces, Small 4 pieces like in the picture.



5 Attach the large pattern firmly with glue stick on the cork clay.
 *Do not expand and tear.
 *Use some glue stick. Water glue causes tears in Paper Type due to moisture.



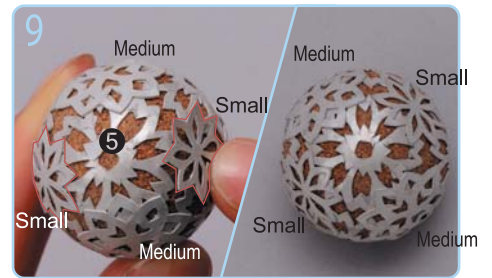
6 Attach 4 large pieces each on the cork clay in this picture's order.



Attach the large pieces on both sides (see image).



Attach the 2 medium pieces in a diagonal line from the large piece, and continue to the opposite side by overlapping.



Attach 2 small pieces between the medium pieces, and continue to the opposite side (Attach in a diagonal direction so as not to distort during firing).



Make a seat for the piece on some fiber blanket, place the piece, and cover around the piece with the blanket lightly and fire (p.3).



After firing, paste watered Overlay Silver Paste over the entire piece, and fire at 800°C/1472°F for 5 mins. (Paste Overlay Silver Paste liberally on the joints).
*Overlay Silver Paste reinforces the piece.

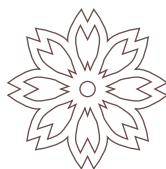


After firing, polish the entire piece with a stainless steel brush, and thread the chain through two gaps.



Finish.

Design Pattern



Large



Medium



Small

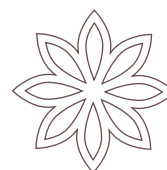
Option



...Option...

Can make an alternate piece, using only the large and small design patterns. Attach the 6 large parts as above in Steps 6·7. Then, attach the 8 small parts on the other positions as in Steps 8·9.

Design Pattern

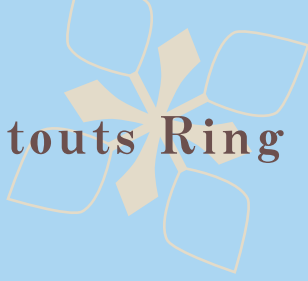


Large



Small

Paper Cutouts Ring



Materials: Art Clay™ Silver Paper Type (approx. 1 sheet), Fine silver round wire ϕ 0.8 (approx. 1cm long), Pearl (half-drilled) 1pc, Art Clay™ Silver 650/1200 Clay Type (approx. 10g), Art Clay™ Silver Oil Paste (a small amount)

Tools: Craft knife, Rubber protection mat for a craft knife, Carbon paper, Drill bit ϕ 1, Detachable Pin Vise, Epoxy adhesive, Stainless steel brush (Ex-Narrow)



1 Place a sheet of carbon paper and the design (p.20) on a sheet of Paper Type, and transcribe the pattern onto the Paper Type by tracing with a pencil.



2 Cut out 2 pieces from the center according to the pattern with the craft knife.



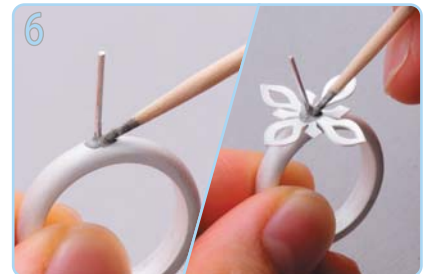
3 Fire from room temperature to 850°C /1562°F for 20mins.
*Can bend easily if firing at 850°C/1562°F for 20mins.



4 Make a rope ring with Clay Type, insert the wire and fire.



5 Drill holes into the center of the patterns with the drill bit.



6 Attach a small amount of Oil Paste around the wire, and insert one piece. Then, attach Oil Paste around the wire again, and insert the other part, so as to alternate the pattern.



7 Stand up the ring with some fiber blanket, dry and fire at 850°C/1562°F for 10mins.



8 Lightly polish with a stainless steel brush, and attach the pearl with some epoxy adhesive.



9 Curl up the inner part with a burnisher little by little, and polish with an extra narrow stainless steel brush so as not to damage the pearl.



10 Attach a small amount of epoxy adhesive to the inside of part, and curl up around the pearl.



11 Curl up the outer part around the inner part, attach the inside parts with some epoxy adhesive and position completely with a burnisher.



12 Polish the ring part with the stainless steel brush, and make a mirror finish on the inside of the ring. Then, polish the base of the pearl well and finish.

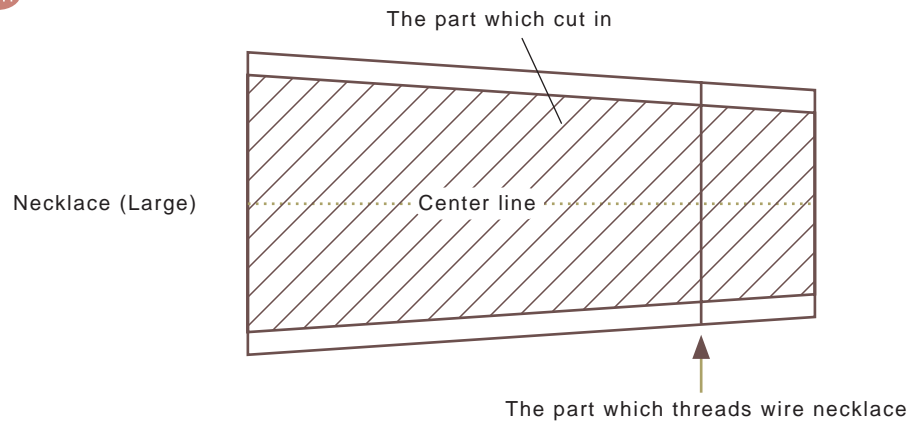
Assembled hinge bracelet

Design Pattern

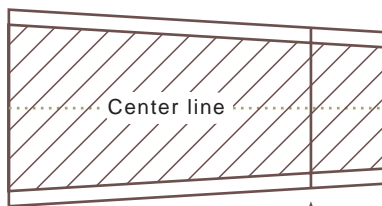


Flower Accessories

Design Pattern



Necklace (Medium)
or Ring



The part which threads wire necklace
(Do not need line for the ring design)

Necklace (Small)



The part which threads wire necklace

Ring

Design Pattern

